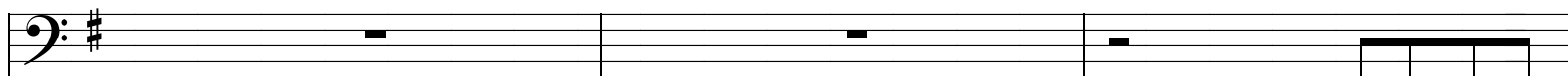
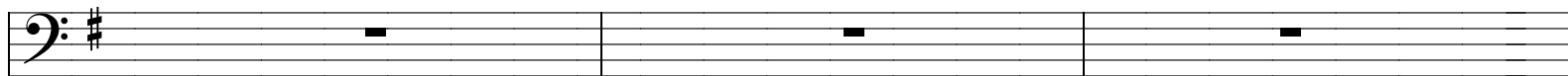
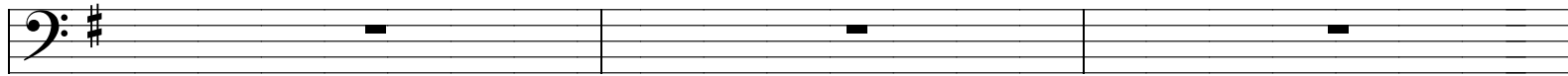
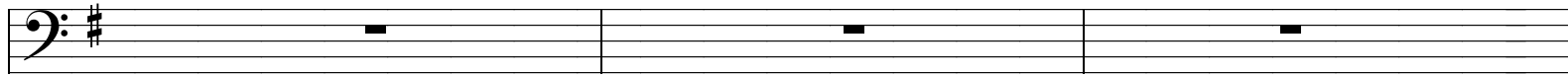
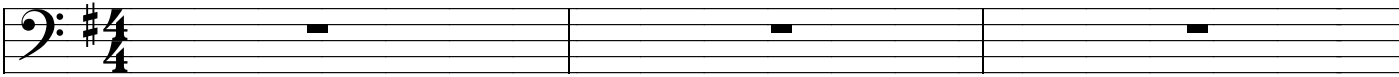


Segovia de Luna

Parte I
América

Andante (85)

Contrabajos



Bass clef, key signature of one sharp (F#). First staff of music, measures 1-3. Consists of eighth-note patterns.

Bass clef, key signature of one sharp (F#). Second staff of music, measures 4-6. Includes dynamic marking *mf* under the second measure.

Bass clef, key signature of one sharp (F#). Third staff of music, measures 7-9. Consists of eighth-note patterns.

Bass clef, key signature of one sharp (F#). Fourth staff of music, measures 10-12. Includes dynamic marking *p* under the second measure.

Bass clef, key signature of one sharp (F#). Fifth staff of music, measures 13-15. Includes dynamic marking *mf* under the second measure.

Bass clef, key signature of one sharp (F#). Sixth staff of music, measures 16-18. Consists of eighth-note patterns.

Bass clef, key signature of one sharp (F#). Seventh staff of music, measures 19-21. Includes rests in the second and third measures.

Bass clef, key signature of one sharp (F#). Eighth staff of music, measures 22-24. Includes dynamic marking *f* under the first measure and sharp signs (#) above the second and third measures.

